

* Inflation

- $P \uparrow$
- durchgängig
- dauerhafte

Warenkorb

\emptyset



Laspeyres

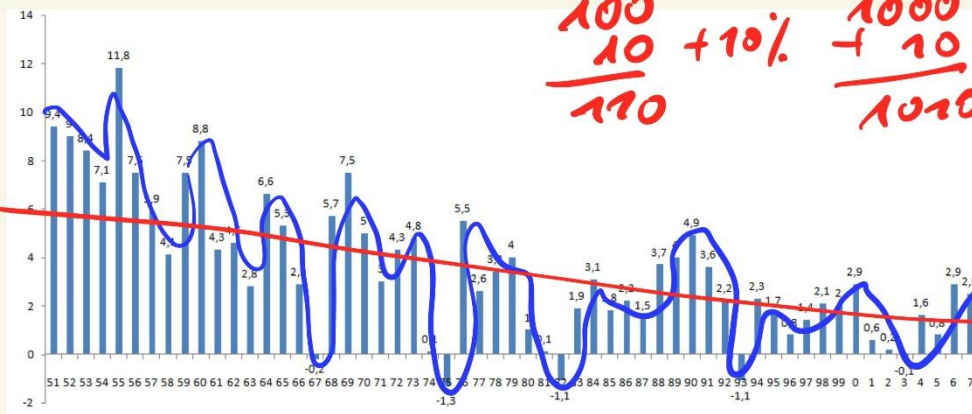
$$\frac{\sum X_{t-1} \cdot P_t}{\sum X_{t-1} \cdot P_{t-1}}$$

VPI: 3124

1,022

ETB → Leitfilter \uparrow

Rekursion - Konjunktur

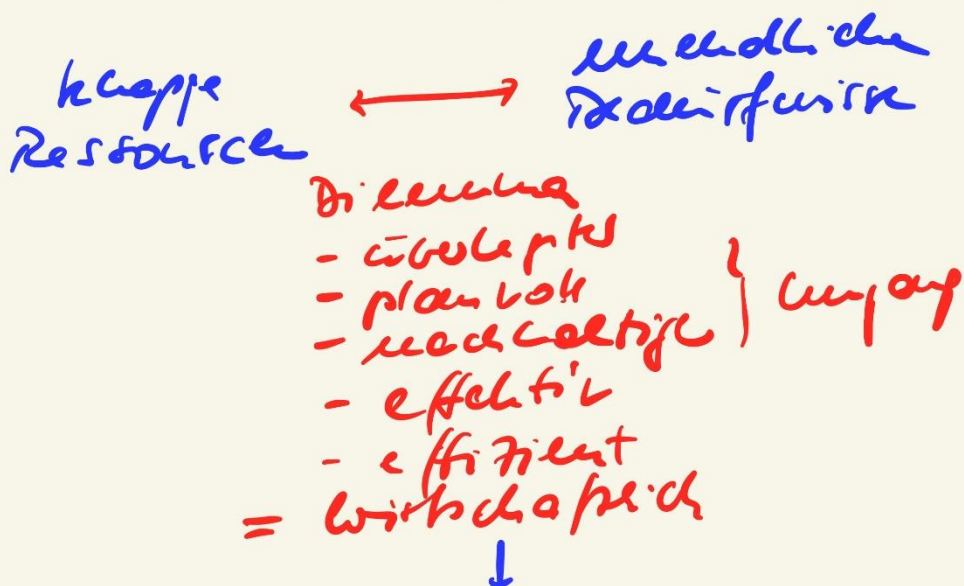


$$\frac{100}{10} + 10\% = \frac{1000}{100} + 10\%$$

Club of Rome
MIT Headlines 72
"Grenze der Leistung"
2030

0. Grundbegriffe

Wirtschaften?

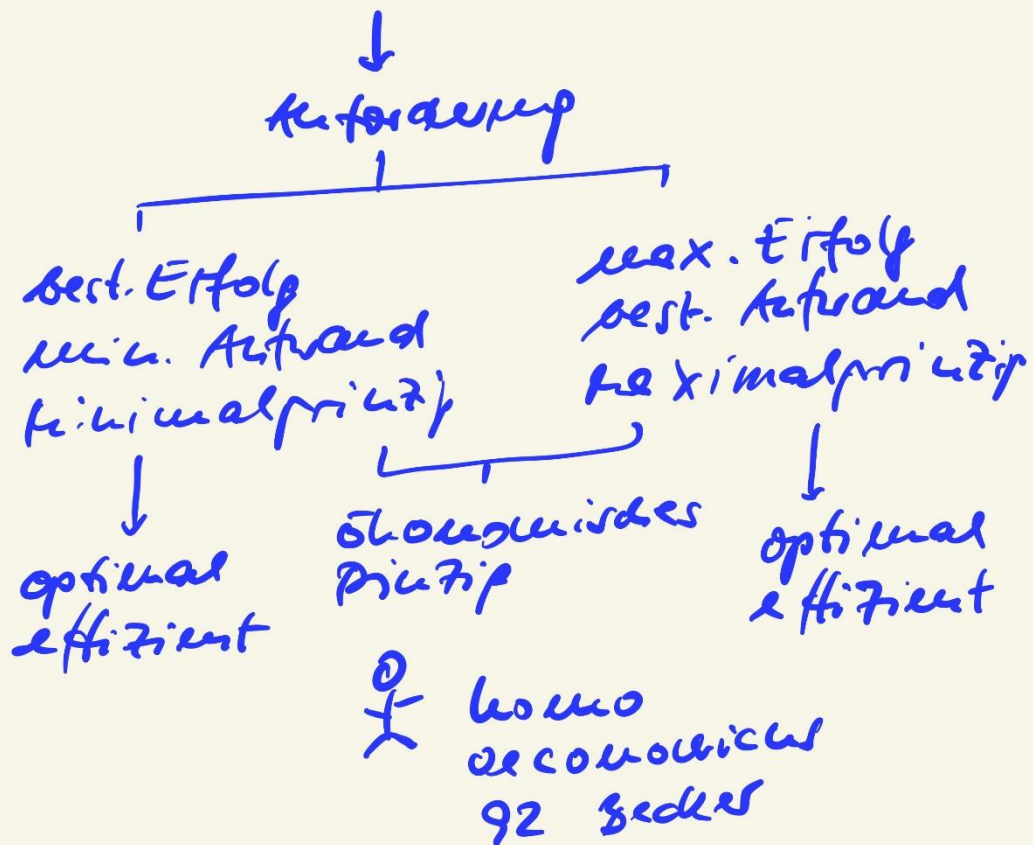


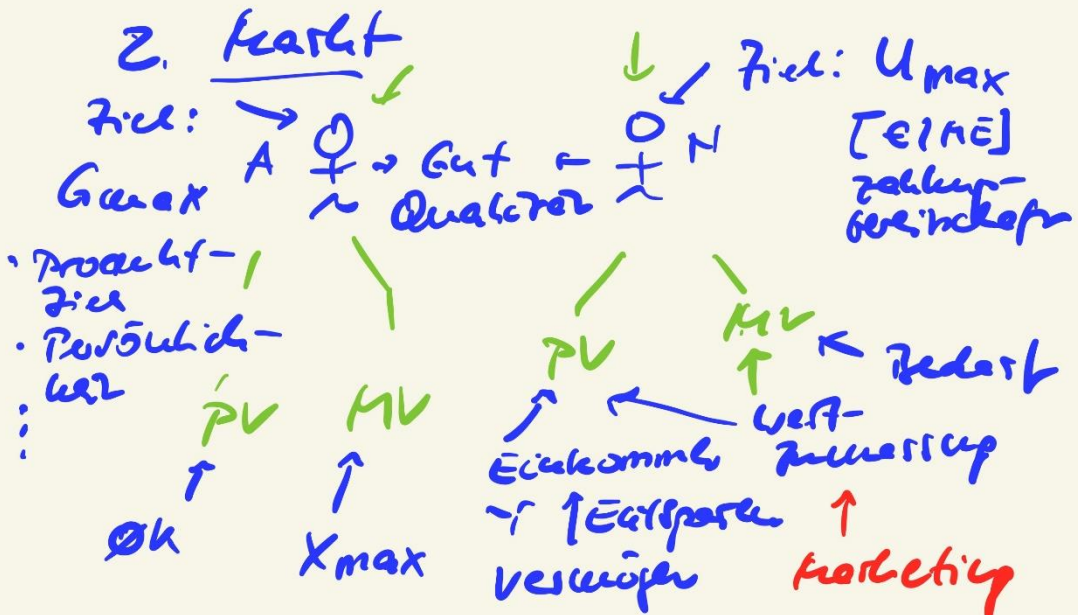
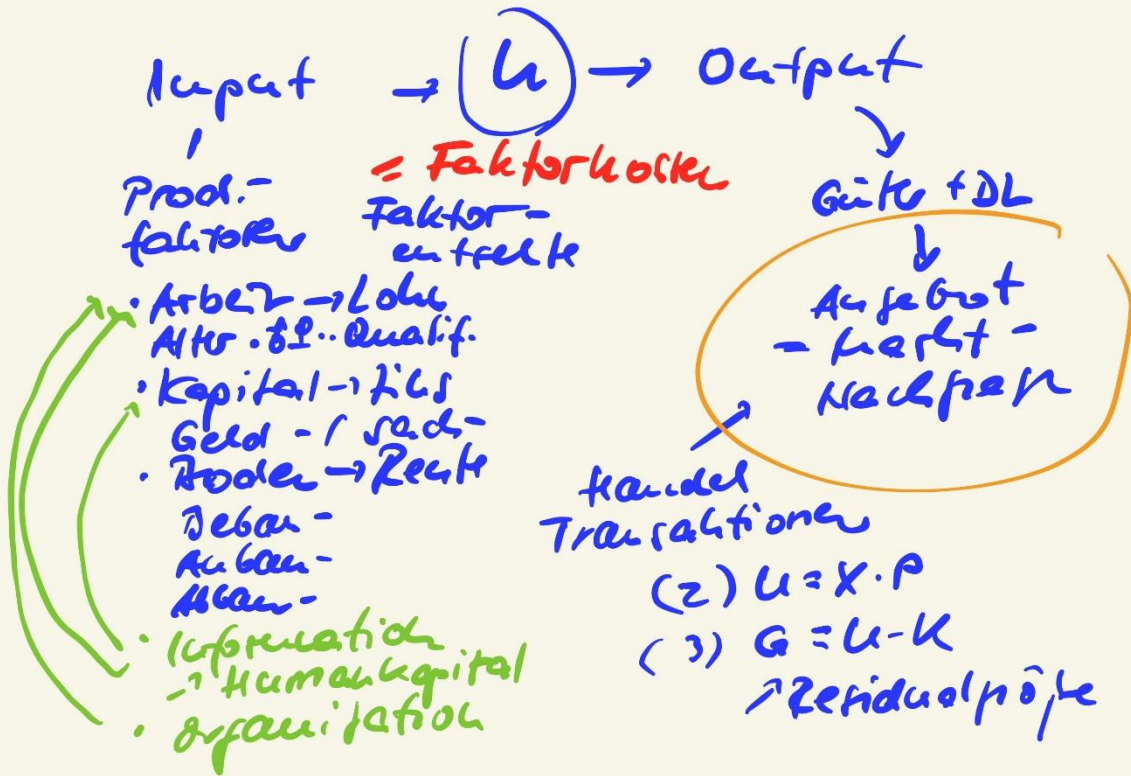
$$(1) \text{ Effektivität} = \frac{\text{Erfolg}}{\text{Aufwand}}$$

$$(1.a) \frac{\text{Gewinn}}{\text{Kapitalwert}} = \text{Kapitalrentabilität}$$

$$(1.b) \frac{\text{Output}}{\text{Arbeitsaufwand}} = \text{Arbeitsproduktivität}$$

$$(1.c) \frac{\text{Umsatz}}{\text{Kosten}} = \text{Wirtschaftlichkeit}$$





* PAZ
Determinante $\log A; N$

